

ARGUS®

THE TRIPLE PLAY AND xDSL-TESTERS FOR ALL SERVICE TECHNICIANS

all-in-one device:

- Data (HTTP, FTP)
- Voice (VoIP)
- TV (IPTV, VoD)



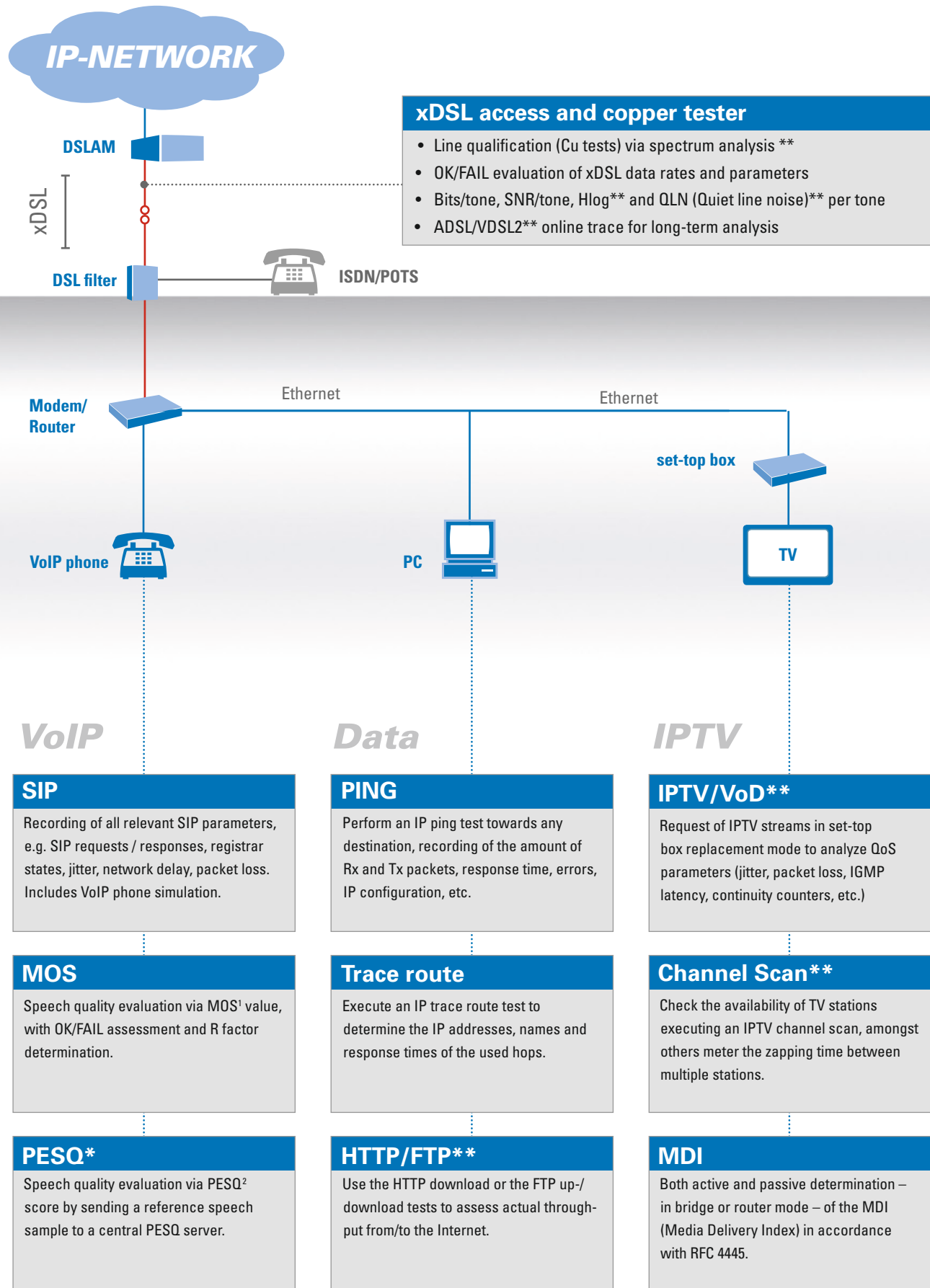
- VDSL **
- ADSL
- SHDSL *
- ETH
- ISDN
- POTS
- Cu **
- TDR **
- Data 10110101011
- IP TV **
- Vo IP
- MOS
- PESQ *
- PC
- USB

intec

GESELLSCHAFT FÜR
INFORMATIONSTECHNIK mbH

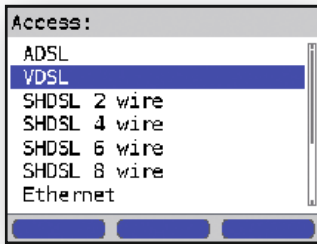
Where to test Triple Play services with ARGUS?

Possible applications to qualify IP networks using ARGUS Triple Play test sets



How to test Triple Play services with ARGUS?

5 Steps: Triple Play Testing with ARGUS – quick, simple, reliable!



1

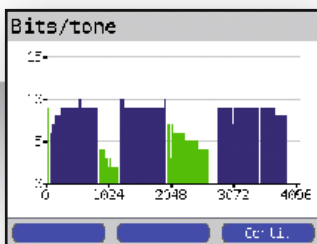
Choose interface type

Interfaces available:

- ADSL, ADSL2/2+ (Annex A, B, J, L, M)
- VDSL2 (profiles 8 a/b/c/d, 12 a/b, 17 a, 30 a)**
- SHDSL (2-, 4-, 6- and 8-wire, “.bis”)*
- Ethernet (10/100 Base-T)

Modes of operation:

- xDSL modem mode (through/bridge mode)
- xDSL router mode (PC replacement poss.)
- PC replacement mode (modem/router + TE)
- STU-C mode* (DSLAM simulation)



2

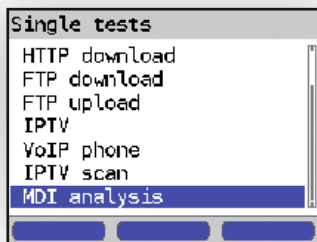
Setup the access

• ADSL/SHDSL*:

- ATM tests: VPI/VCI scan, OAM ping
- xDSL/Ethernet:
- Definition of threshold for OK/FAIL evaluation
- Synchronization / link setup

• Assess and store all important results:

- For up- and downstream
- Line attenuation, SNR margin
- Bits, SNR, Hlog, QLN per tone
- Analyze the modem trace



3

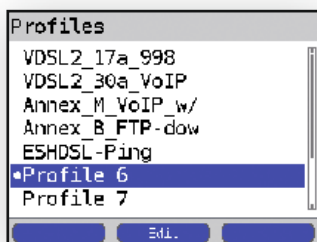
Choose type of test

• xDSL/Ethernet: Choose type of test and service

- IP ping, IP trace route
- HTTP down-, FTP up-/download**
- VoIP phone
- IPTV, channel scan, MDI analysis

• Protocol setup via:

- PPPoE, PPPoA, IPoA, EoA, IP
- PPP: authentication with:
- User name, password
- Display of PPP login trace



4

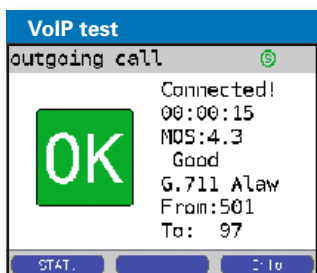
Choose profile or destination – Start

• Profiles and destinations:

- Selection of destination addresses (IP)
- Use pre-configured access profiles
- Select service profiles
- Feel free to rename profiles

• Some test results (see examples below):

- VoIP test with OK evaluation of the MOS
- Data service testing, here FTP upload
- Video stream analysis with MDI



5

Data service testing

FTP upload	
Bitrate	
Average	1.151 Mb/s
Filesize	
Overall	9.536 MB
Time	
Average	0:01:09

Video MDI analysis

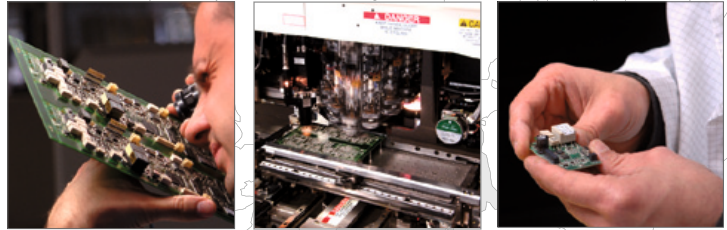
MDI analysis	
t:	0:00:12
DF:	66ms
MLR:	0/s
PLR:	0.00%
CC F.:	0/s

In use throughout Europe

intec Gesellschaft für Informationstechnik mbH is developing products for the international telecommunications market for more than 20 years and is one of the leading suppliers for xDSL, ISDN and IP measurement technology in Europe today.

With the aid of ARGUS measurement equipment, users can conveniently and safely commission and troubleshoot xDSL and ISDN accesses as well as inspect services like VoIP and IPTV based hereon. ARGUS testers are designed to meet the day-to-day needs of the field staff; consequently intec engineers focus on ensuring high-quality measurements combined with simply and convenient operation.

The portfolio of ARGUS testers, software and analyzers benefits from a continuous development and is kept up-to-date with support for the current standards for all the common access types and protocols as well as for the features of the Next Generation Networks (NGN) and Triple Play services. Throughout the world, numerous telecommunication companies have come to appreciate and rely on the advantages offered by intec equipment; to name just a few Deutsche Telekom, Saudi Telecom, Telefonica, KPN, British Telecom and Telekom Austria.



ARGUS[®] MADE IN GERMANY

GESELLSCHAFT FÜR
INFORMATIONSTECHNIK mbH

Rahmedestr. 90
D-58507 Lüdenscheid

Tel: +49 (0) 23 51/90 70-0
Fax: +49 (0) 23 51/90 70-70

sales@argus.info
www.argus.info

ARGUS overview

	165	145 plus	142	42 plus	141	42 basic	125	3u NT	3u plus	3u basic
VDSL2	✓ ³	✓ ³	✓ ³		✓					
ADSL ¹	✓ ³	✓ ³	✓ ³	✓ ³	✓	✓	✓ ³			
SHDSL	✓	✓								
10/100 Base-T (Cu)	✓	✓	✓	✓	✓		✓			
1000 Base-T (Cu)	✓	✓ ²								
2 x SFP	✓									
BRI U	✓	✓	✓	✓			✓	✓	✓	✓
BRI S/T TE/LL	✓	✓	✓	✓			✓	✓	✓	✓
BRI S/T NT/mon.	✓	✓					✓	✓		
PRI/E1		✓					✓			
POTS	✓	✓	✓	✓			✓	✓	✓	✓
RC	✓	✓	✓	✓			✓	✓	✓	
DMT Analysis	✓	✓	✓		✓					
Line Scope	✓	✓	✓							
Probe	✓	✓	✓							
TDR	✓	✓	✓							
LQ/DELT			✓							
Bridge	✓	✓	✓	✓	✓	✓	✓			
Router	✓	✓	✓	✓	✓		✓			
IP Tests	✓	✓	✓	✓ ²	✓	✓ ²	✓			
Down-/upload	✓	✓	✓	✓ ²	✓		✓			
IPTV/MDI	✓	✓	✓	✓ ²						
VoIP & MOS	✓	✓	✓	✓	✓		✓			
PESQ		✓					✓			
	165	145 plus	142	42 plus	141	42 basic	125	3u NT	3u plus	3u basic

✓ inclusive

✓ optional

✓ minimum one DSL interface is part of the standard package

¹ Annex may vary depending on country.

² On request

³ Online trace in combination with WINAnalyse